



AP3 S
Cylinders



AP3 S Cylinders

CYLINDER SECURITY – Attack Resistance

- High breaking and pulling resistance thanks to the Snap resistant cylinder: the steel bi-material core is visible also with the cylinder already installed on the door.
- High bumping (striking) resistance thanks to the BKP (Bump Key Power) device.
- High anti-burglary (impression or wax techniques) resistance thanks to the special configuration of the springs.
- High drill resistance, thanks to the hardened steel key biting system (all the pins, drivers and inserts on both sides of the cylinder).

KEY RELATED SECURITY

- PATENTED KEY, protected against illegal production.
- Harder to clone thanks to the mobile spring element.
- Security Card for authorized key reproduction by CISA Solution Partners and CISA.
- Bitting system with 11 pins arranged on 3 rows.
- Up to 40 million possible combinations (different keys), including mechanical profiles.

MASTER KEYING POTENTIAL

- The 11 pin key bitting system offers excellent access management possibilities. For example: 132,000 different cylinders for one master key.

DURABILITY

- 100,000 cycles (compliant with EN 1303:Durability – Class 6).

EN 1303:2005

Compliant with the European Standard EN 1303:2005.

- **Attack resistance: 2** 0 1 2

- **Key Related Security: 6** 1 2 3 4 5 6

- **Durability: 6** 4 5 6

CERTIFICATIONS

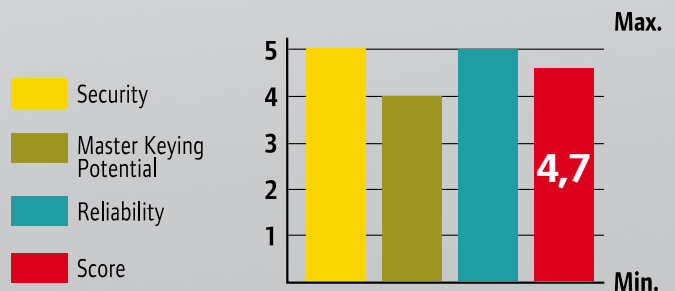
- SKG ** – Holland
- Ghost – Russia
- ICIM EN 1303:05 16010C62 – Europe

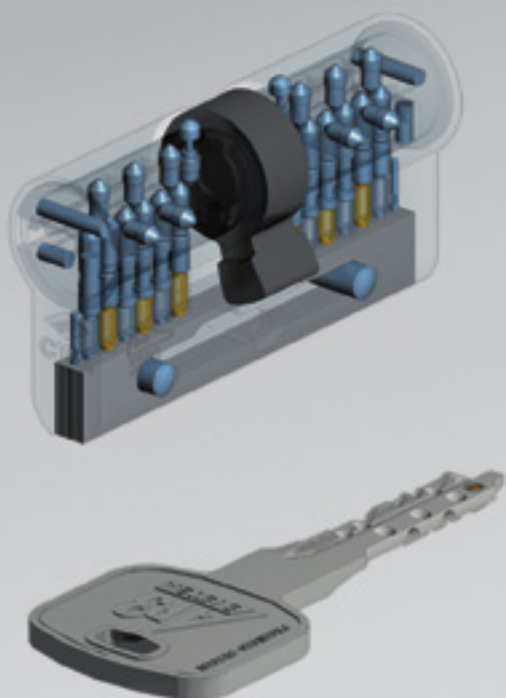
PATENTS

- Key: PCT/EP99/07611.
- Snap Resistant Cylinder: B02003V000006.
- BKP: registered patent.

APPLICATIONS

AP3 S is the ideal product for high-security applications (residential buildings, armored door manufacturing). Good potential for access management in offices and factories, shopping centers, universities and hospitals.



**Technical features:****CYLINDER:**

- Key biting system: 11 pins (6 active, 5 passive).
- Brass body with segment pack throughout the cylinder length (except single cylinders, other cylinders and rim versions).
- Brass plugs.
- Self-lubricated sintered steel DIN cam.
- Hardened steel pins and drivers.
- Phosphor bronze and steel springs.

KEY:

- Flat, non-handed insertion.
- Material: nickel-silver alloy.
- Numbered key head.
- Thickness: 2.9 mm.
- Depth: 0.48 mm.
- Compatible with protective roses.

Finishes:

- Standard: sanded nickel-plated brass (fin. 12).
- On request: polished brass (fin. 66).

On request:

- KA, MK, GMK, GGMK, CE, CA, CL (ALI key), C5, PP and their variations.
- DADA system, 1,2,3 system, 1,2 system and construction system (ALI key version only).

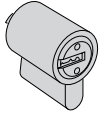
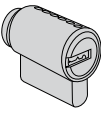
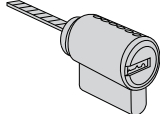
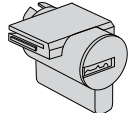
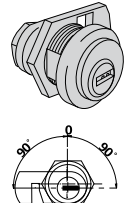
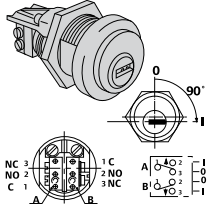
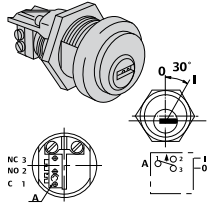
Supplied as standard:

- Fixing screw.
- User and maintenance instructions.
- 3 keys item 1.00770.00.0.
- SECURITY CARD.

Type	Description	Comm. dim.	L	A	B	Pins	Key item	Kg Unit weight	Pieces	ITEM				
										Type	Dim.	Hand	Fin.	Pers.
	•SNAP RESISTANT Double cylinder	30/30	59,0	29,5	29,5	12	1 00770 00 0	0,250	1	1	OH350	07	0	12
		30/37	66,0	29,5	36,5	12	1 00770 00 0	0,255	1	1	OH350	26	0	12
		30/35	64,0	29,5	34,5	12	1 00770 00 0	0,260	1	1	OH350	76	0	12
		33/33	65,0	32,5	32,5	12	1 00770 00 0	0,260	1	1	OH350	10	0	12
		40/30	69,0	39,5	29,5	12	1 00770 00 0	0,275	1	1	OH350	12	0	12
		35/35	69,0	34,5	34,5	12	1 00770 00 0	0,270	1	1	OH350	13	0	12
		30/45	74,0	29,5	44,5	12	1 00770 00 0	0,290	1	1	OH350	27	0	12
		35/40	74,0	34,5	39,5	12	1 00770 00 0	0,285	1	1	OH350	28	0	12
		30/50	79,0	29,5	49,5	12	1 00770 00 0	0,305	1	1	OH350	17	0	12
		35/45	79,0	34,5	44,5	12	1 00770 00 0	0,300	1	1	OH350	19	0	12
		40/40	79,0	39,5	39,5	12	1 00770 00 0	0,300	1	1	OH350	18	0	12
		30/55	84,0	29,5	54,5	12	1 00770 00 0	0,318	1	1	OH350	33	0	12
		35/50	84,0	34,5	49,5	12	1 00770 00 0	0,315	1	1	OH350	31	0	12
		40/45	84,0	39,5	44,5	12	1 00770 00 0	0,315	1	1	OH350	30	0	12
		30/60	89,0	29,5	59,5	12	1 00770 00 0	0,335	1	1	OH350	20	0	12
		35/55	89,0	34,5	54,5	12	1 00770 00 0	0,330	1	1	OH350	32	0	12
		40/50	89,0	39,5	49,5	12	1 00770 00 0	0,330	1	1	OH350	21	0	12
		45/45	89,0	44,5	44,5	12	1 00770 00 0	0,330	1	1	OH350	29	0	12
		40/55	94,0	39,5	54,5	12	1 00770 00 0	0,345	1	1	OH350	42	0	12
		45/50	94,0	44,5	49,5	12	1 00770 00 0	0,345	1	1	OH350	39	0	12
		30/70	99,0	29,5	69,5	12	1 00770 00 0	0,380	1	1	OH350	24	0	12
		35/65	99,0	34,5	64,5	12	1 00770 00 0	0,365	1	1	OH350	22	0	12
		40/60	99,0	39,5	59,5	12	1 00770 00 0	0,365	1	1	OH350	25	0	12
		45/55	99,0	44,5	54,5	12	1 00770 00 0	0,365	1	1	OH350	43	0	12
		50/50	99,0	49,5	49,5	12	1 00770 00 0	0,365	1	1	OH350	23	0	12
		30/80	109,0	29,5	79,5	12	1 00770 00 0	0,395	1	1	OH350	37	0	12
		40/70	109,0	39,5	69,5	12	1 00770 00 0	0,390	1	1	OH350	35	0	12
		50/60	109,0	49,5	59,5	12	1 00770 00 0	0,390	1	1	OH350	36	0	12
		55/55	109,0	54,5	54,5	12	1 00770 00 0	0,390	1	1	OH350	70	0	12
		40/80	119,0	39,5	79,5	12	1 00770 00 0	0,420	1	1	OH350	60	0	12
	•SNAP RESISTANT Double Cylinder with Clutch System	30/30	59,0	29,5	29,5	12	1 00770 00 0	0,250	1	1	OH351	07	0	12
		30/35	64,0	29,5	34,5	12	1 00770 00 0	0,250	1	1	OH351	26	0	12
		40/30	69,0	39,5	29,5	12	1 00770 00 0	0,275	1	1	OH351	12	0	12
		35/35	69,0	34,5	34,5	12	1 00770 00 0	0,270	1	1	OH351	13	0	12
		30/45	74,0	29,5	44,5	12	1 00770 00 0	0,280	1	1	OH350	27	0	12
		35/40	74,0	34,5	39,5	12	1 00770 00 0	0,250	1	1	OH351	28	0	12
		30/50	79,0	29,5	49,5	12	1 00770 00 0	0,305	1	1	OH351	17	0	12
		35/45	79,0	34,5	44,5	12	1 00770 00 0	0,305	1	1	OH351	19	0	12
		40/40	79,0	39,5	39,5	12	1 00770 00 0	0,305	1	1	OH351	18	0	12
		35/50	84,0	34,5	49,5	12	1 00770 00 0	0,315	1	1	OH351	31	0	12
		40/45	84,0	39,5	44,5	12	1 00770 00 0	0,344	1	1	OH351	30	0	12
		45/45	89,0	44,5	44,5	12	1 00770 00 0	0,320	1	1	OH351	29	0	12
		40/50	89,0	39,5	49,5	12	1 00770 00 0	0,320	1	1	OH351	21	0	12
		35/55	89,0	34,5	54,5	12	1 00770 00 0	0,330	1	1	OH351	32	0	12
		30/60	89,0	29,5	59,5	12	1 00770 00 0	0,320	1	1	OH351	20	0	12
		35/60	94,0	34,5	59,5	12	1 00770 00 0	0,330	1	1	OH351	38	0	12
		50/50	99,0	49,5	49,5	12	1 00770 00 0	0,365	1	1	OH351	23	0	12
		30/70	99,0	29,5	69,5	12	1 00770 00 0	0,390	1	1	OH351	24	0	12
		40/60	99,0	39,5	59,5	12	1 00770 00 0	0,365	1	1	OH351	25	0	12
		50/60	109,0	49,5	59,5	12	1 00770 00 0	0,390	1	1	OH351	36	0	12
50/80	129,0	49,5	79,5	12	1 00770 00 0	0,420	1	1	OH351	55	0	12		
30/80	109,0	29,5	79,5	12	1 00770 00 0	0,418	1	1	OH351	37	0	12		
40/70	109,0	39,5	69,5	12	1 00770 00 0	0,418	1	1	OH351	35	0	12		

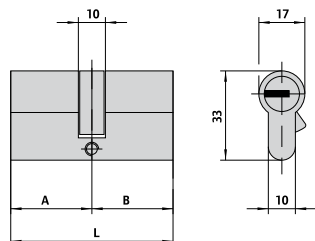
Type	Description	Comm. dim.	L	A	B	Pins	Key item	Kg	Pieces	ITEM				
										Type	Dim.	Hand	Fin.	Pers.
	<ul style="list-style-type: none"> • Single cylinder with cam adjustable to 8 positions • Body without segment pack 	30/10	39,5	29,5	10,0	12	1 00770 00 0	0,185	1	1	OH314	02	0	12
		35/10	44,5	34,5	10,0	12	1 00770 00 0	0,195	1	1	OH314	07	0	12
		40/10	49,5	39,5	10,0	12	1 00770 00 0	0,215	1	1	OH314	03	0	12
		45/10	54,5	44,5	10,0	12	1 00770 00 0	0,225	1	1	OH314	08	0	12
		50/10	59,5	49,5	10,0	12	1 00770 00 0	0,245	1	1	OH314	04	0	12
		60/10	69,5	59,5	10,0	12	1 00770 00 0	0,275	1	1	OH314	05	0	12
		65/10	74,5	64,5	10,0	12	1 00770 00 0	0,290	1	1	OH314	21	0	12
		70/10	79,5	69,5	10,0	12	1 00770 00 0	0,305	1	1	OH314	06	0	12
		80/10	89,5	79,5	10,0	12	1 00770 00 0	0,330	1	1	OH314	20	0	12
		95/10	104,5	94,5	10,0	12	1 00770 00 0	0,380	1	1	OH314	13	0	12
	<ul style="list-style-type: none"> • SNAP RESISTANT double cylinder pre-set for thumb turn installation • ON REQUEST: Thumb turn knobs - item 1.06353.00 - item 1.06354.00 	30/30	59,0	29,5	29,5	12	1 00770 00 0	0,265	1	1	OH352	07	0	12
		33/33	65,0	32,5	32,5	12	1 00770 00 0	0,275	1	1	OH352	10	0	12
		30/35	64,0	29,5	34,5	12	1 00770 00 0	0,275	1	1	OH352	26	0	12
		35/35	64,0	34,5	29,5	12	1 00770 00 0	0,275	1	1	OH352	81	0	12
		30/40	69,0	29,5	39,5	12	1 00770 00 0	0,288	1	1	OH352	83	0	12
		40/30	69,0	39,5	29,5	12	1 00770 00 0	0,288	1	1	OH352	12	0	12
		35/35	69,0	34,5	34,5	12	1 00770 00 0	0,285	1	1	OH352	13	0	12
		35/40	74,0	34,5	39,5	12	1 00770 00 0	0,295	1	1	OH352	28	0	12
		40/35	74,0	38,5	34,5	12	1 00770 00 0	0,295	1	1	OH352	82	0	12
		45/30	74,0	44,5	29,5	12	1 00770 00 0	0,295	1	1	OH352	91	0	12
		30/45	74,0	29,5	44,5	12	1 00770 00 0	0,295	1	1	OH352	27	0	12
		30/50	79,0	29,5	49,5	12	1 00770 00 0	0,315	1	1	OH352	17	0	12
		35/45	79,0	34,5	44,5	12	1 00770 00 0	0,310	1	1	OH352	19	0	12
		40/40	79,0	39,5	39,5	12	1 00770 00 0	0,310	1	1	OH352	18	0	12
		45/35	79,0	44,5	34,5	12	1 00770 00 0	0,310	1	1	OH352	85	0	12
		50/30	79,0	49,5	29,5	12	1 00770 00 0	0,310	1	1	OH352	90	0	12
		40/45	84,0	39,5	44,5	12	1 00770 00 0	0,325	1	1	OH352	80	0	12
		35/50	84,0	34,5	49,5	12	1 00770 00 0	0,325	1	1	OH352	31	0	12
		45/40	84,0	44,5	39,5	12	1 00770 00 0	0,325	1	1	OH352	84	0	12
		30/55	84,0	29,5	54,5	12	1 00770 00 0	0,325	1	1	OH352	33	0	12
		50/35	84,0	49,5	34,5	12	1 00770 00 0	0,325	1	1	OH352	94	0	12
		30/60	89,0	29,5	59,5	12	1 00770 00 0	0,345	1	1	OH352	20	0	12
		40/50	89,0	39,5	49,5	12	1 00770 00 0	0,340	1	1	OH352	21	0	12
		45/45	89,0	44,5	44,5	12	1 00770 00 0	0,340	1	1	OH352	29	0	12
		40/55	94,0	39,5	54,5	12	1 00770 00 0	0,345	1	1	OH352	42	0	12
		55/40	94,0	54,5	39,5	12	1 00770 00 0	0,345	1	1	OH352	98	0	12
		45/55	99,0	44,5	54,5	12	1 00770 00 0	0,360	1	1	OH352	43	0	12
		50/50	99,0	49,5	49,5	12	1 00770 00 0	0,360	1	1	OH352	23	0	12
		55/45	99,0	54,5	44,5	12	1 00770 00 0	0,360	1	1	OH352	99	0	12
		55/50	104,0	54,5	49,5	12	1 00770 00 0	0,370	1	1	OH352	64	0	12
60/50	109,0	59,5	49,5	12	1 00770 00 0	0,380	1	1	OH352	89	0	12		
55/60	114,0	54,5	59,5	12	1 00770 00 0	0,390	1	1	OH352	71	0	12		
60/60	119,0	59,5	59,5	12	1 00770 00 0	0,405	1	1	OH352	40	0	12		
65/55	119,0	64,5	54,5	12	1 00770 00 0	0,405	1	1	OH352	86	0	12		
	<ul style="list-style-type: none"> • SNAP RESISTANT double cylinder pre-set for adjustable shaft thumb turn installation • To install with protective rose item 1.06458.20 • ON REQUEST: Thumb turn knobs - item 1.06353.00 - item 1.06354.00 	30/30	59,0	29,5	29,5	12	1 00770 00 0	0,265	1	1	OH357	07	0	12
		35/30	64,0	34,5	29,5	12	1 00770 00 0	0,275	1	1	OH357	81	0	12
		40/30	69,0	39,5	29,5	12	1 00770 00 0	0,288	1	1	OH357	12	0	12
		45/30	74,0	44,5	29,5	12	1 00770 00 0	0,295	1	1	OH357	91	0	12
		50/30	79,0	49,5	29,5	12	1 00770 00 0	0,310	1	1	OH357	90	0	12
		60/30	89,0	59,5	29,5	12	1 00770 00 0	0,360	1	1	OH357	87	0	12
		70/30	99,0	69,5	29,5	12	1 00770 00 0	0,370	1	1	OH357	88	0	12

Type	Description	For locks series	L	Pins	Key item	Unit weight	Pieces	ITEM				
								Type	Dim.	Hand	Fin.	Pers.
	• Cylinder	1A610, 11540, 11610, 11615, 50010, 50110, 50115, 50130, 50180, 50330, 54310, 50312, 54315, 54340, 54342, 54350, 54352, 54510, 54512, 54550, 54552, 54570, 54572	12	1	1 00770 00 0	0,204	1	1	OH510	00	0	12
	• Cylinder with nickel-plated anti-pulling and drill resistant protective rose		12	1	1 00770 00 0	0,325	1	1	OH510	10	0	12
	• Tubular cylinder	1A611, 11611, 50111, 50116, 50131, 50181, 50411, 50481, 50511, 50581, 54316, 54341	50,0	12	1 00770 00 0	0,215	1	1	OH210	50	0	12
	• Pair of cylinders with external tubular cylinder	1A631, 1A721, 1A731,	55,0	5	1 00770 00 0	0,295	6	1	OH150	00	0	12
	• Pair of cylinders	50120, 50125, 50160, 50170	12	1	1 00770 00 0	0,267	1	1	OH112	00	0	12
		11560, 11630, 11635,	12	1	1 00770 00 0	0,295	1	1	OH114	00	0	12
	• Pair of cylinders with external tubular cylinder	50121, 50126, 50141, 50161, 50171, 50421, 50461, 50471, 50521, 50561, 50571	12	1	1 00770 00 0	0,295	1	1	OH116	00	0	12
		11551, 11631, 11731, 11736, 11931, 11936	12	1	1 00770 00 0	0,295	1	1	OH120	00	0	12
	• Pair of cylinders with external tubular cylinder	11660, 11670	12	1	1 00770 00 0	0,295	1	1	OH156	00	0	12
	• Pair of cylinders with external tubular cylinder	11521, 11721, 11726, 11921, 11926	50,0	12	1 00770 00 0	0,295	1	1	OH149	00	0	12
		11661, 11671, 11761, 11771	50,0	12	1 00770 00 0	0,253	1	1	OH155	00	0	12

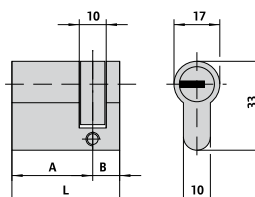
Type	Description	Door thickness	Plins	Key item	Unit weight Kg	Pieces	ITEM							
							Type	Dim.	Hand	Fin.	Pers.	Spec.		
	<ul style="list-style-type: none"> • Plug for steel padlocks • 2 keys • Pickled brass casing • Complete with coupling plate item 1.07573.08.0 	12	1	100770.00.0	0,117	1	1	OH610	00	0				
	<ul style="list-style-type: none"> • Cylinder for external drives item 1.07077.78.0 • Ground brass 	12	1	100770.00.0	0,117	1	1	OH610	10	0				
	<ul style="list-style-type: none"> • Cylinder for external drives item 1.07077.79.0 • Ground brass 	12	1	100770.00.0	0,117	1	1	OH610	11	0				
	<ul style="list-style-type: none"> • Cylinder for push-to-open Meroni locks 	12	1	100770.00.0	0,117	1	1	OH610	12	0	12			
	<ul style="list-style-type: none"> • Vertical key extraction • Ring item 1.06021.10.0 • Deadlock item 1.06414.20.0 or 1.06414.30.0 (to order separately) 	19	12	100770.00.0	0,117	1	1	OH410	00	0	12			
	<ul style="list-style-type: none"> • Microswitch (7A, 250V) with welding terminals • Automatic return to key extraction position (0) • Ring item 1.06021.10.0 	19	12	100770.00.0	0,117	1	1	OH415	01	0	12			
	<ul style="list-style-type: none"> • Microswitch (7A, 250V) with welding terminals • Automatic return to key extraction position (0) • Ring item 1.06021.10.0 	19	12	100770.00.0	0,117	1	1	OH415	03	0	12			

Drawings and Dimensions

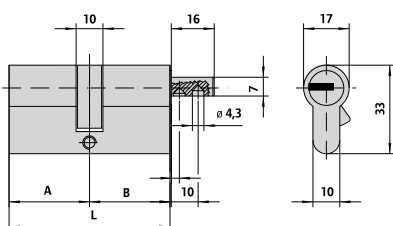
CISA S.p.A. reserves the right to modify the products illustrated in this catalogue without any prior notice. All given measurements are expressed in millimeters.



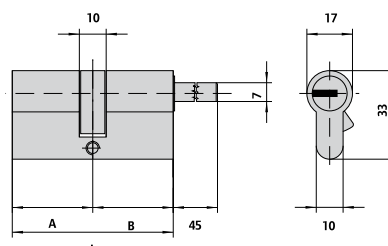
OH350, OH351



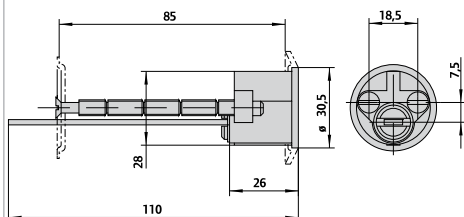
OH314



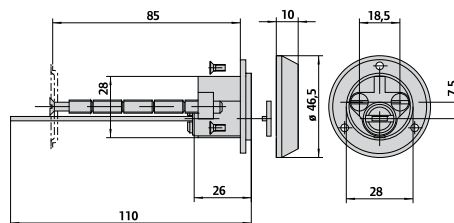
OH352



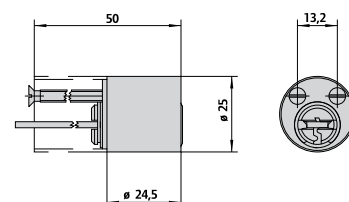
OH357



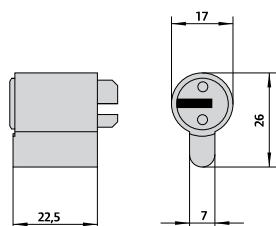
OH510



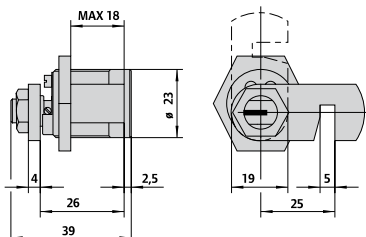
1.OH510.10.0



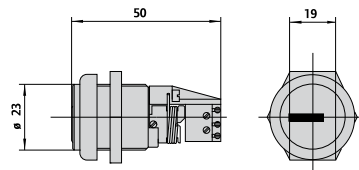
OH210



OH610



OH410



OH415

About Allegion

Allegion (NYSE: ALLE) creates peace of mind by pioneering safety and security. As a \$2 billion provider of security solutions for homes and businesses, Allegion employs more than 7,800 people and sells products in more than 120 countries across the world. Allegion comprises 23 global brands, including strategic brands CISA®, Interflex®, LCN®, Schlage® and Von Duprin®. For more, visit allegion.com



BRICARD ■ Briton ■ CISA ■ interflex

CISA SpA
 Via Oberdan 42 - 48018 Faenza (RA) Italy
 Tel +39 0546 677111 - Fax +39 0546 677150
cisa.vendite@allegion.com
cisa.com - cisahotels.com

@cisalocks



© 2014 Allegion
allegion.com